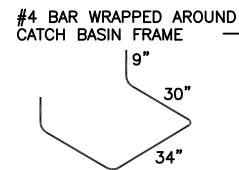
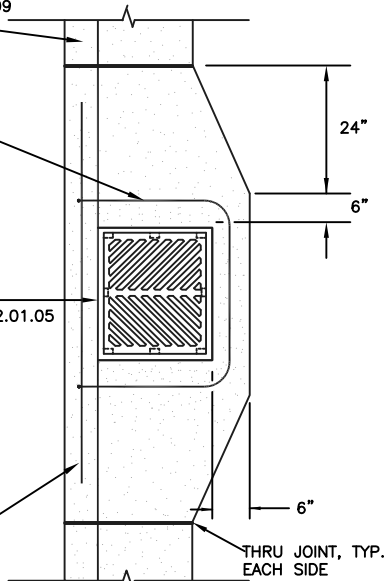


CURB AND GUTTER, SEE CITY STANDARD DETAIL NO. 01.02.09 FOR ADDITIONAL INFORMATION

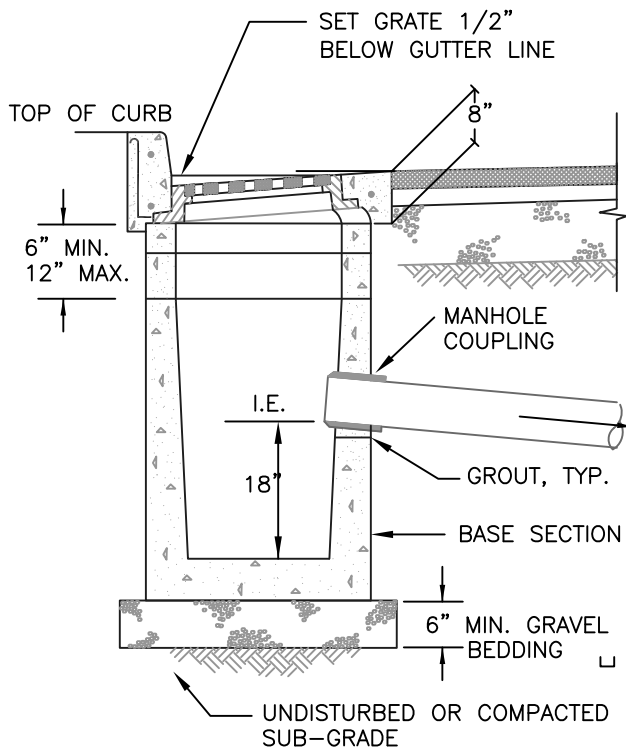


CAST IRON FRAME & GRATE SEE CITY STANDARD DETAIL NO. 02.01.05

2- #4 x 6' TOP AND BOTTOM, PLACE TOP BAR 3" FROM TOP OF THE CURB, PLACE BOTTOM BAR 3" FROM BOTTOM OF THE CURB



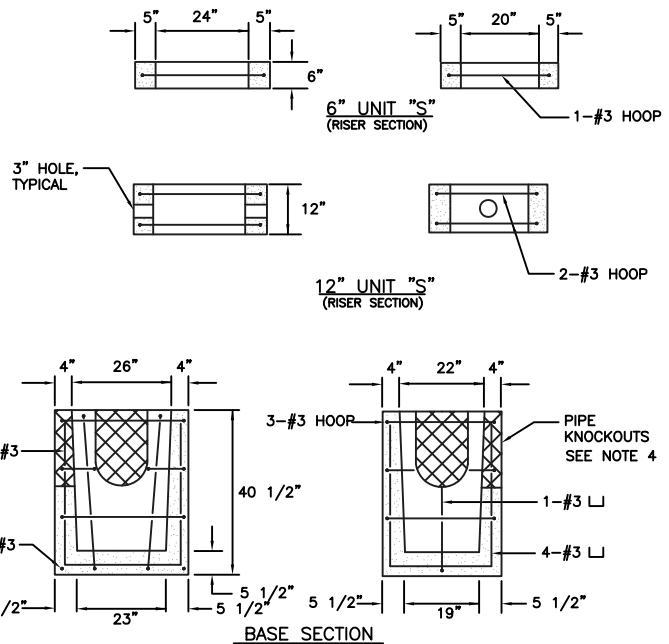
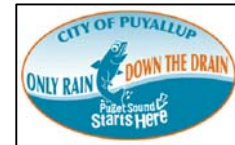
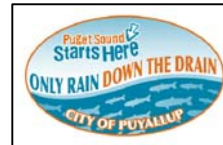
PLAN VIEW



SECTION VIEW

NOTES:

1. MAXIMUM LENGTH OF PIPE BETWEEN CATCH BASINS SHALL BE 400'.
2. MAXIMUM GUTTER LINE FLOW LENGTH SHALL BE 300'.
3. TYPE 1 CATCH BASIN IS USED FOR DEPTHS LESS THAN 5'-0" FROM TOP OF GRATE TO I.E.(PIPE INVERT).
4. PRECAST BASE SECTION SHALL BE FURNISHED WITH CUTOUTS OR KNOCKOUTS. KNOCKOUTS SHALL HAVE A WALL THICKNESS OF 2" MIN. KNOCKOUTS SHALL BE ON 4 SIDES WITH A MAXIMUM DIAMETER OF 20" TO PROVIDE FOR A MINIMUM SUMP DEPTH OF 18".
5. REINFORCING BARS SHALL BE CUT OR BENT AS REQUIRED TO CLEAR CUTOUTS.
6. THE TAPER ON THE SIDES OF THE PRECAST BASE SECTION SHALL NOT EXCEED 1/2" PER FOOT.
7. CATCH BASIN SHALL BE CONSTRUCTED IN ACCORDANCE WITH ASTM C 478 (AASHTO M 199) AND ASTM C 890 UNLESS OTHERWISE NOTED.
8. THE APRON SHALL BE 8" IN DEPTH.
9. CATCH BASIN MARKER WILL BE AFFIXED WITH MANUFACTURER'S EPOXY IN DRY WEATHER, 40 DEGREES OR WARMER. IF CURB EXISTS MARKER IS PLACED ON TOP OF CURB, IF A RAISED EDGE PLACE MARKER ON THE WEDGE, IF NO CURB PLACE ON PAVEMENT ON SIDE LEAST EXPOSED TO TRAFFIC



CITY OF PUYALLUP

DEVELOPMENT ENGINEERING and PUBLIC WORKS DEPARTMENTS

CATCH BASIN TYPE 1 (GUTTER DRAIN)

DRAWN BY LINDA LANSING	CHECKED BY LINDA LIAN	APPROVED BY COLLEEN HARRIS	REVISED BY XXXXX	CITY STANDARD
FILE NAME F:\DWG\COMMON\STDS\CITY\2009\02_SD\02.01.03	DATE APPROVED 09/01/1992	DATE REVISED 06/01/2003	SCALE NTS	02.01.03