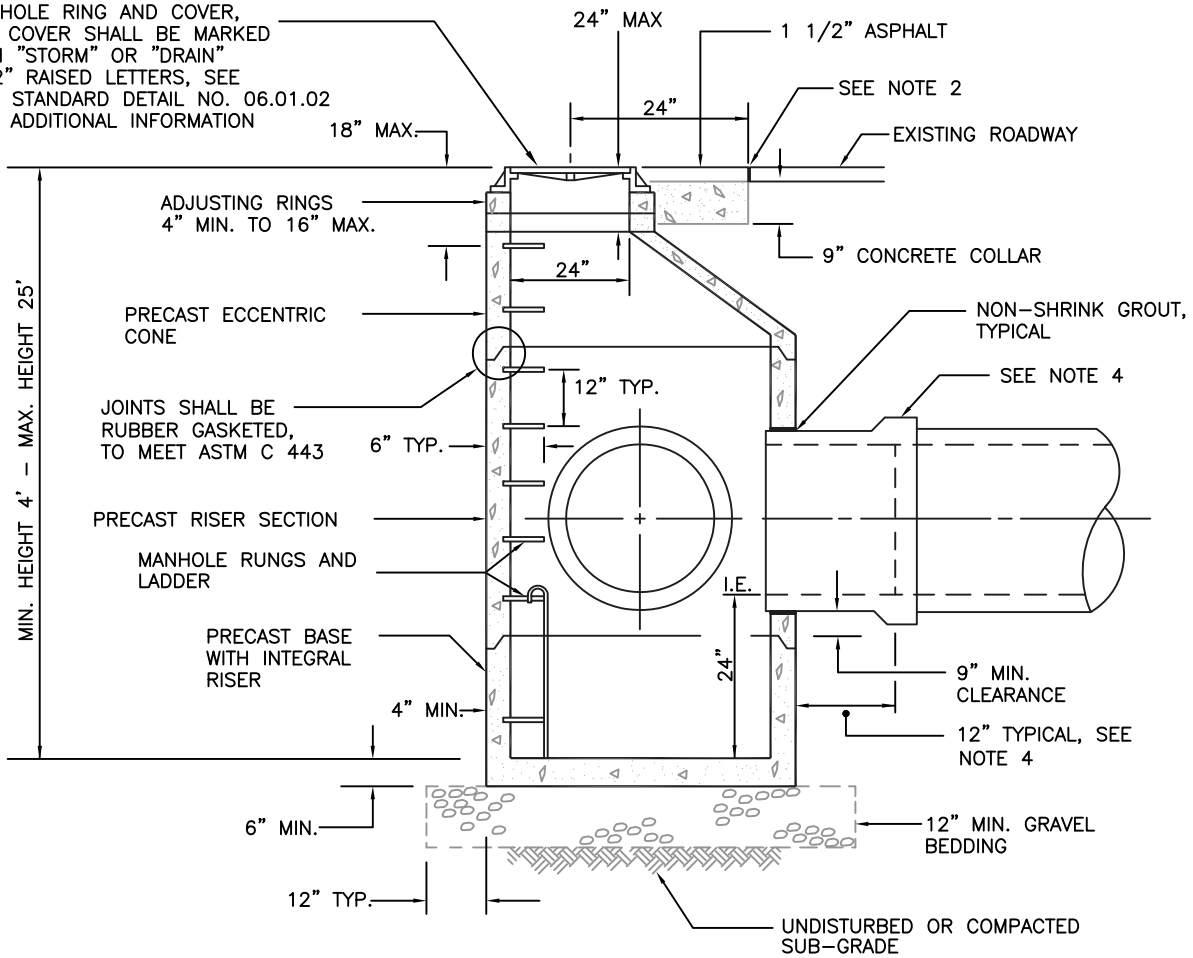


MAHMHOLE RING AND COVER, THE COVER SHALL BE MARKED WITH "STORM" OR "DRAIN" IN 2" RAISED LETTERS, SEE CITY STANDARD DETAIL NO. 06.01.02 FOR ADDITIONAL INFORMATION



NOTES:

1. THE CONSTRUCTION AND INSTALLATION OF STORM SEWER MANHOLES SHALL CONFORM TO THE REQUIREMENTS OF WSDOT SPEC. SECTION 7-05 AND ASTM C 478.
2. THE FACE OF NEAT LINE CUTS IN EXISTING ASPHALT PAVEMENT SHALL BE TACK COATED AND THE TOP OF THE JOINT SHALL BE SEALED WITH A HOT PAVING GRADE ASPHALT.
3. PRECAST RISER SECTION OR PRECAST BASE WITH INTEGRAL RISER SHALL BE FURNISHED WITH CUTOUTS OR KNOCKOUTS WITH A MINIMUM WALL THICKNESS OF 2". THE SIZE OF THE KNOCKOUT SHALL BE EQUAL TO THE PIPE OUTER DIAMETER PLUS THE MANHOLE WALL THICKNESS. THE MAXIMUM HOLE SIZE IS 36" FOR A 48" MANHOLE, 42" FOR A 54" MANHOLE, 60" FOR A 72" MANHOLE, AND 84" FOR A 96" MANHOLE.
4. A FLEXIBLE GASKETED JOINT SHALL BE INSTALLED WITHIN 12" OF EACH CONNECTION TO A MANHOLE. THE CONNECTION OF CONCRETE OR DUCTILE IRON PIPE TO A MANHOLE SHALL BE CEMENT MORTARED. DUCTILE IRON PIPE SHALL BE SEALED WITH MASTIC AT THE CONNECTION POINT PRIOR TO BEING MORTARED. THE CONNECTION OF PVC PIPE TO A MANHOLE SHALL UTILIZE A MANHOLE COUPLING (SAND COLLAR) WITH A RUBBER GASKET.
5. THE MANHOLE COVER SHALL BE MARKED WITH "STORM" OR "DRAIN" IN 2 INCH RAISED LETTERS. MANHOLE RING AND COVER SHALL CONFORM TO CITY STANDARD DETAIL NO. 06.01.03
6. MANHOLE STEP AND LADDER SHALL CONFORM TO CITY STANDARD DETAILS NO. 06.01.04 AND 06.01.05



CITY OF PUYALLUP

DEVELOPMENT ENGINEERING and PUBLIC WORKS DEPARTMENTS

STORM SEWER MANHOLE

<small>DRAWN BY</small> JIM ERWIN-SVOBODA	<small>CHECKED BY</small> LINDA LIAN	<small>APPROVED BY</small> COLLEEN HARRIS	<small>REVISED BY</small> Linda Lian	<small>CITY STANDARD</small> 02.01.01
<small>FILE NAME</small> F:\DWG\COMMON\STDS\CITY\2009\02_SD\02.01.01	<small>DATE APPROVED</small> 09/01/1992	<small>DATE REVISED</small> 09/21/2012	<small>SCALE</small> NTS	