

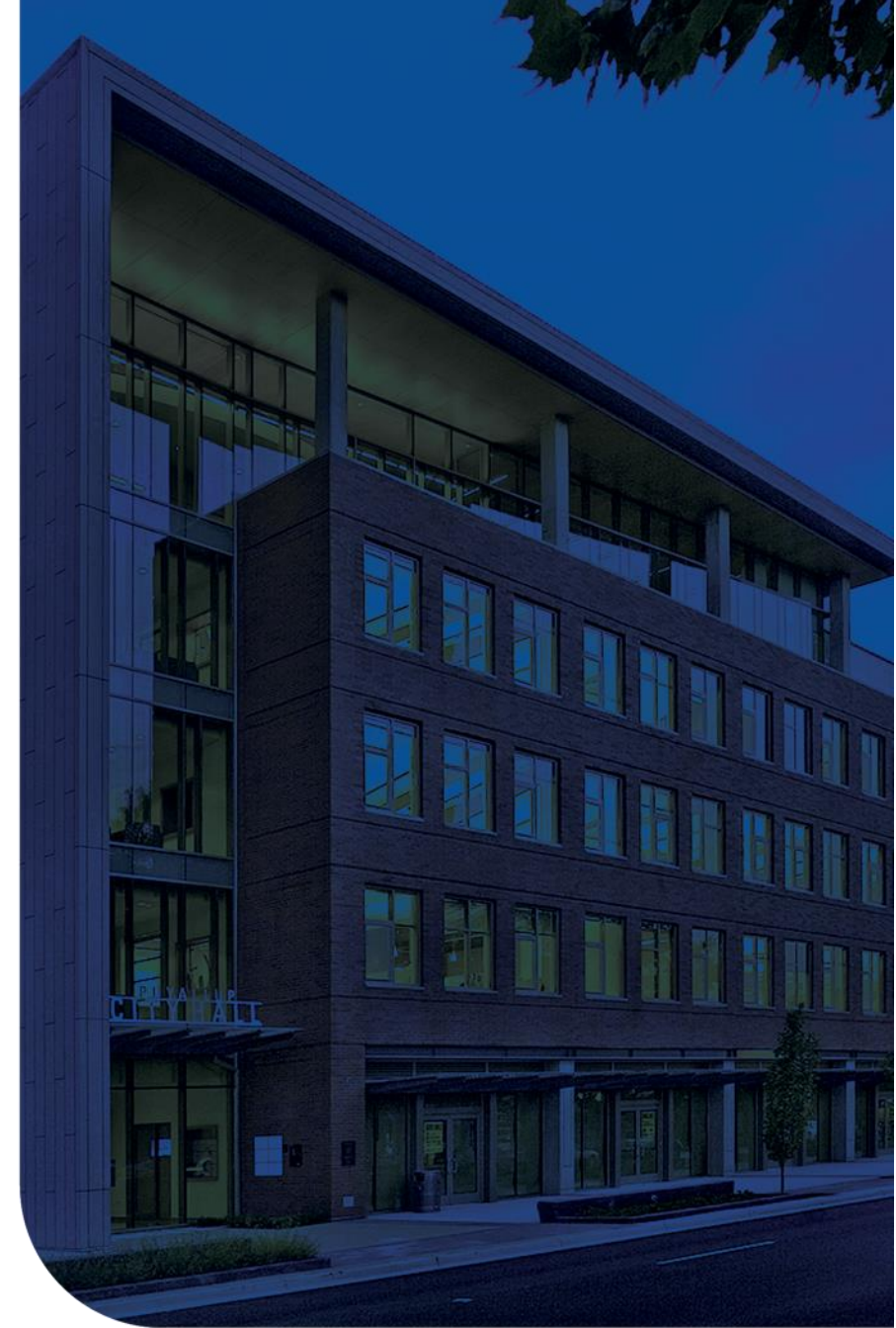


# Environment and Sustainability Action Plan (ESAP) Update

Council Study Session – February 28, 2022

# Meeting goals

- Discuss ESAP project scope, review timeline
- Receive feedback from Council
- Confirm ESAP engagement plan and public survey



# Puyallup ESAP

## Background

- Council budgeted \$100K (2022 budget cycle)
- \$80K Dept of Commerce Climate Planning grant (2022)
- ESAP to be funded mostly with grant funds – balance of previously budgeted going toward full Comp Plan update budget
- Commerce grant funded ESAP and Climate Risk and Vulnerability Assessment, Comp Plan policy update
- Council discussed ESAP topic in October 2021 and February 2022

# Puyallup ESAP Scope & Timeline

Tasks and Deliverables	Dec	Jan	Feb	Mar	Apr	May	June
<b>Task 1. Review Background Info &amp; Assess Current Policy</b>							
Policy review memo							
<b>Task 2. Review, Summarize, &amp; Evaluate Existing Data</b>							
Data collection & review							
Memo/spreadsheet summary							
<b>Task 3. Develop &amp; Implement Public Outreach Plan</b>							
Public outreach plan							
Implement outreach plan							
<b>Task 4. Conduct Vulnerability Assessment</b>							
Summary report							
<b>Task 5. Create ESAP</b>							
Draft plan							
Final plan							
<b>Task 6. Prepare Updated Comprehensive Plan Policies</b>							
Draft policies							
Final policies							
<b>Task 7. Prepare Implementation Plan &amp; Checklist</b>							
Draft implementation plan							
Final implementation plan							






# Policy Audit and Data Review

- **Goals:**
  - Conduct a **policy audit** of existing City codes, standards, plans, projects, and documents that may inform or direct the vulnerability assessment and ESAP.
  - Compile common, high-impact **sustainability, resilience, and mitigation actions** that other Pierce County and Puget Sound communities have committed to.

# Community Risk and Vulnerability Assessment

- **Goal:**
  - Assess the vulnerability of the Puyallup **community, residents/workers, infrastructure, services, and natural systems** to effects of climate and weather-related events (e.g. wildfire smoke, heat waves, flooding, etc)
- **Focus areas:**
  - Public Health and Economic Wellbeing
  - Natural Environment and Water Supply
  - Buildings and Energy
  - Transportation

# Proposed ESAP structure

 <b>Buildings &amp; Energy</b>	 <b>Transportation &amp; Land Use</b>	 <b>Natural Environment</b>	 <b>Consumption &amp; Waste</b>	 <b>Community Wellbeing &amp; Resilience</b>
Increasing the use of clean, renewable energy, reducing energy consumption, and promoting sustainable building development	Increasing mobility and transportation options that are more sustainable, accessible, and safe	Protecting and enhancing our waterways and natural systems and resources	Reducing waste generation, and increasing recycling, composting, and reuse.	Enhancing public health, emergency preparedness, and addressing disproportionate impacts to the city's most vulnerable communities

# ESAP Approach

- **Goal:** Develop actions City and community can take to address impacts to the environment, promote sustainability
- Types of **sustainability** strategies and actions:
  - Waste management and plastic reduction
  - Electric vehicle infrastructure investments
  - Walking, biking and transit access improvements
  - Energy efficient actions to reduce energy consumption
  - Sustainable and low impact development patterns
  - Green infrastructure to help restore salmon, decrease impervious cover, and increase tree cover
  - Farmland and natural resource protection actions
  - Community well-being and resilience



# GHG Policy

- GHG reductions targets – adopted by state law
- City of Puyallup Comp Plan adopted policy to broadly promote reduction of GHG consistent with State initiatives and directives
- State legislature proposals (SB 5203, 2023, plus others in recent years) would require Climate Planning in all local Comp Plans under GMA
- Department of Commerce developing a model Climate Element for use by local agencies
- Commerce Climate Planning grant meant to allow cities to plan in advance of policy mandates

## 2020: Updated GHG targets (RCW 70A.45.020)

By 2030, 45%  
below 1990 levels



By 2040, 70%  
below 1990 levels

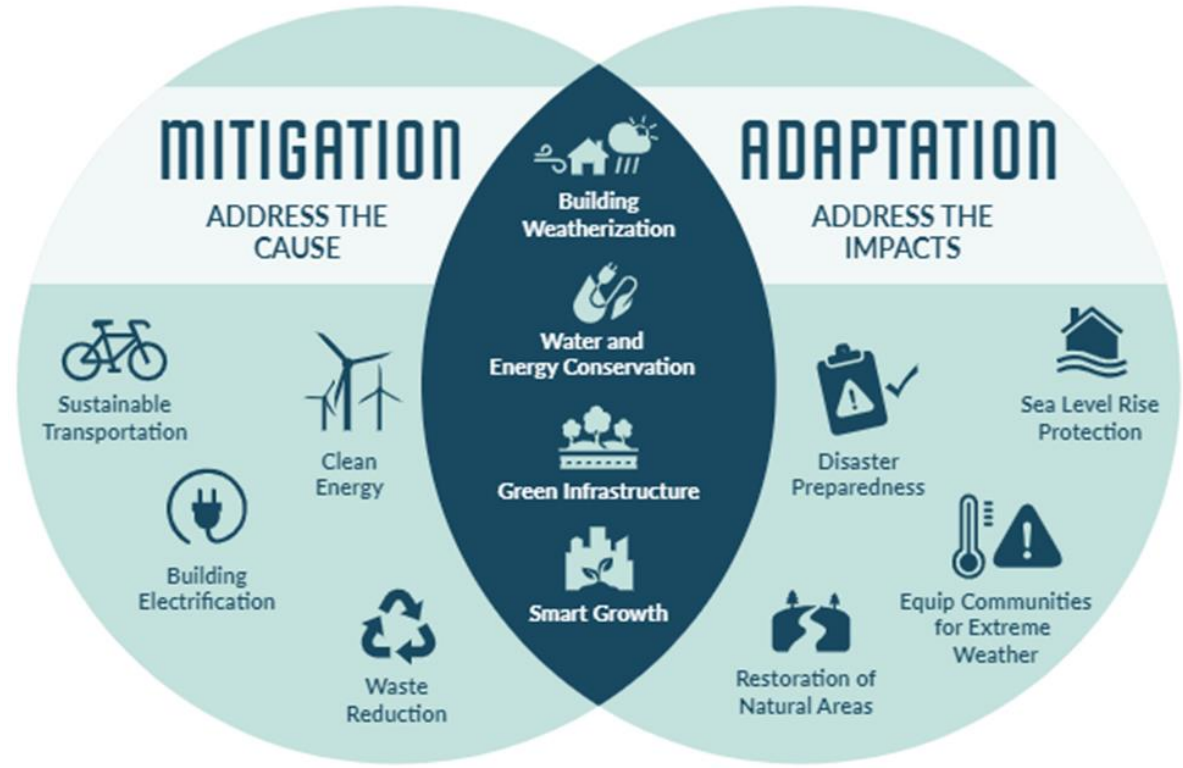


By 2050, 95%  
below 1990 levels

# ESAP Approach

- GHG reductions ~ Types of strategies and actions:
  - **Mitigation** (GHG Emissions Reduction Target):
    - Address the cause: prevent climate change through reduction in GHG emissions and increasing carbon “sinks” store these gases.
  - **Adaptation** (Vulnerability Assessment):
    - Adaptation actions to address local climate change related impacts, such as heat waves, wildfires fires, and flooding

How does the Council want to approach GHG emission reduction actions in the ESAP?



# ESAP Engagement Plan

- **November – January**
  - Internal project kickoff, background data collection and analysis
- **February**
  - **Council briefing #1** ~ study session to review overall project
- **March**
  - Launch **ESAP community survey** to gather early input from Puyallup communities on ESAP vision, goals, priorities and concerns
- **April**
  - **Planning Commission** briefing
  - **City staff workshop** to review data, draft policy, provide input

# ESAP Engagement Plan

- **May**
  - **Council briefing #2** ~ Review survey data, preview community workshop, opportunity to provide preliminary policy direction on ESAP
  - **Community workshop** ~ Revise and refine strategies and actions for the ESAP with Puyallup communities through a virtual
- **June / July**
  - **Council briefing #3** ~ review draft plan prior to public release
  - Draft ESAP released for **public comment** through an online interactive comment platform.
- **Q3/Q4, 2023**
  - Council reviews and approved **final plan**

# ESAP Community survey

- General themes of the ESAP survey
  - Request feedback on community awareness and concerns on sustainability, climate and weather-related events
  - Vision of Puyallup in 2050 in terms of sustainability and the environment
  - Requesting input on support for the preliminarily identified focus areas for the ESAP
  - Requesting input on strategies for the ESAP
  - Requesting input on how invested the city should be in implementing ESAP strategies, including input on how to weight implementation based on costs



# Puyallup Environment and Sustainability Action Plan (ESAP)