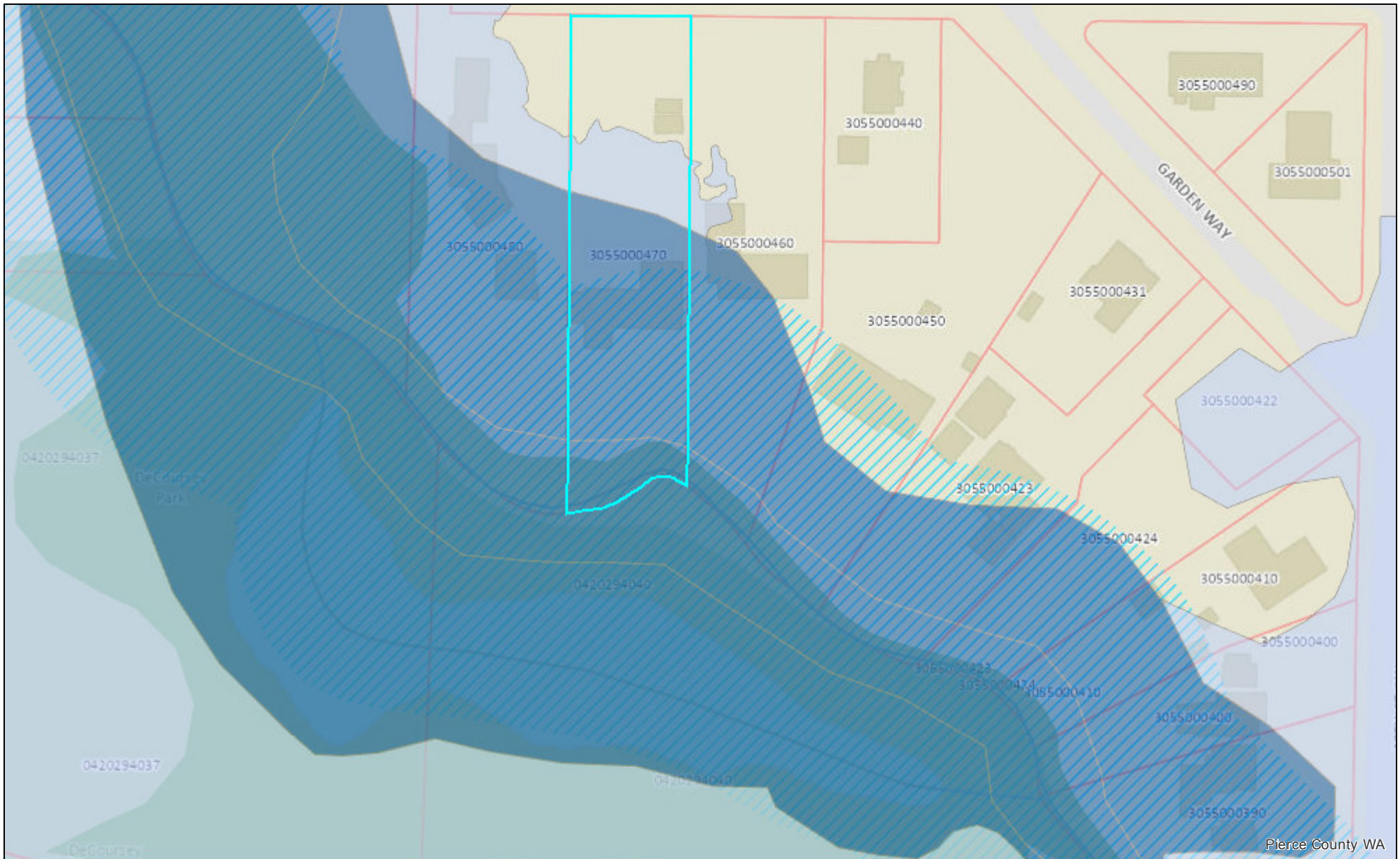




1922 5th Ave SW



Regulated Floodplain 2017

- 1% Annual Chance Flood
- X BEHIND LEVEE

0.2 PCT

X (SHADED)

Coastal High Hazard Areas

See King County FIRM

Wetlands - Puyallup

Field-verified Delineated

Field-verified

Unverified

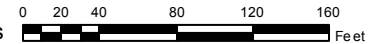
Buffer

Mitigation Site

Potential Stream Buffers

Streams - Puyallup

1:1,200



Date: 5/26/2021