

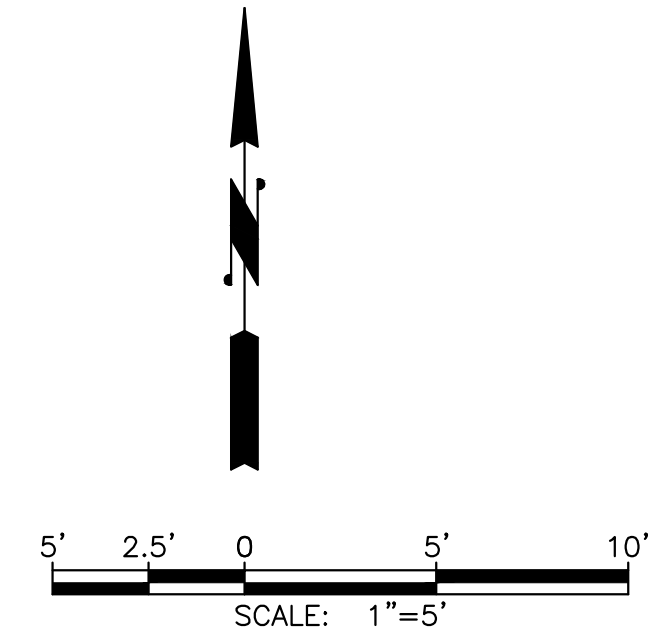
BUILDING DATA	
ZONING	ML - LIMITED MANUFACTURING
BUILDING AREA	355 SF
OCCUPANCY TYPE	F-2
TYPE OF CONSTRUCTION	V-B
HAZARDOUS MATERIAL STORAGE	EXISTING 140 GALLON GENERATOR SUBBASE DIESEL FUEL TANK

SITE DATA	
PUMP STATION EASEMENT AREA	2,009 SF
PARKING	N/A
IMPERVIOUS SURFACE AREA PUMP STATION EASEMENT (EXISTING)	1,826 SF
IMPERVIOUS SURFACE AREA PUMP STATION EASEMENT (PROPOSED)	1,477 SF
LANDSCAPED AREA	374 SF
LANDSCAPED AREA AS PERCENTAGE OF TOTAL EASEMENT AREA	19%

- LEGEND:**
- RIGHT-OF-WAY
 - PROPERTY BOUNDARY
 - OHWM SETBACK
 - EXISTING CONTOUR LINE
 - PROPOSED CONTOUR LINE
 - EXISTING ASPHALT PAVEMENT
 - EXISTING GRAVEL SURFACING
 - EXISTING CONCRETE SURFACING
 - EXISTING FENCE
 - NEW FENCE
 - DIRECTION OF SLOPE
 - NEW ASPHALT PAVEMENT SURFACE
 - LANDSCAPING

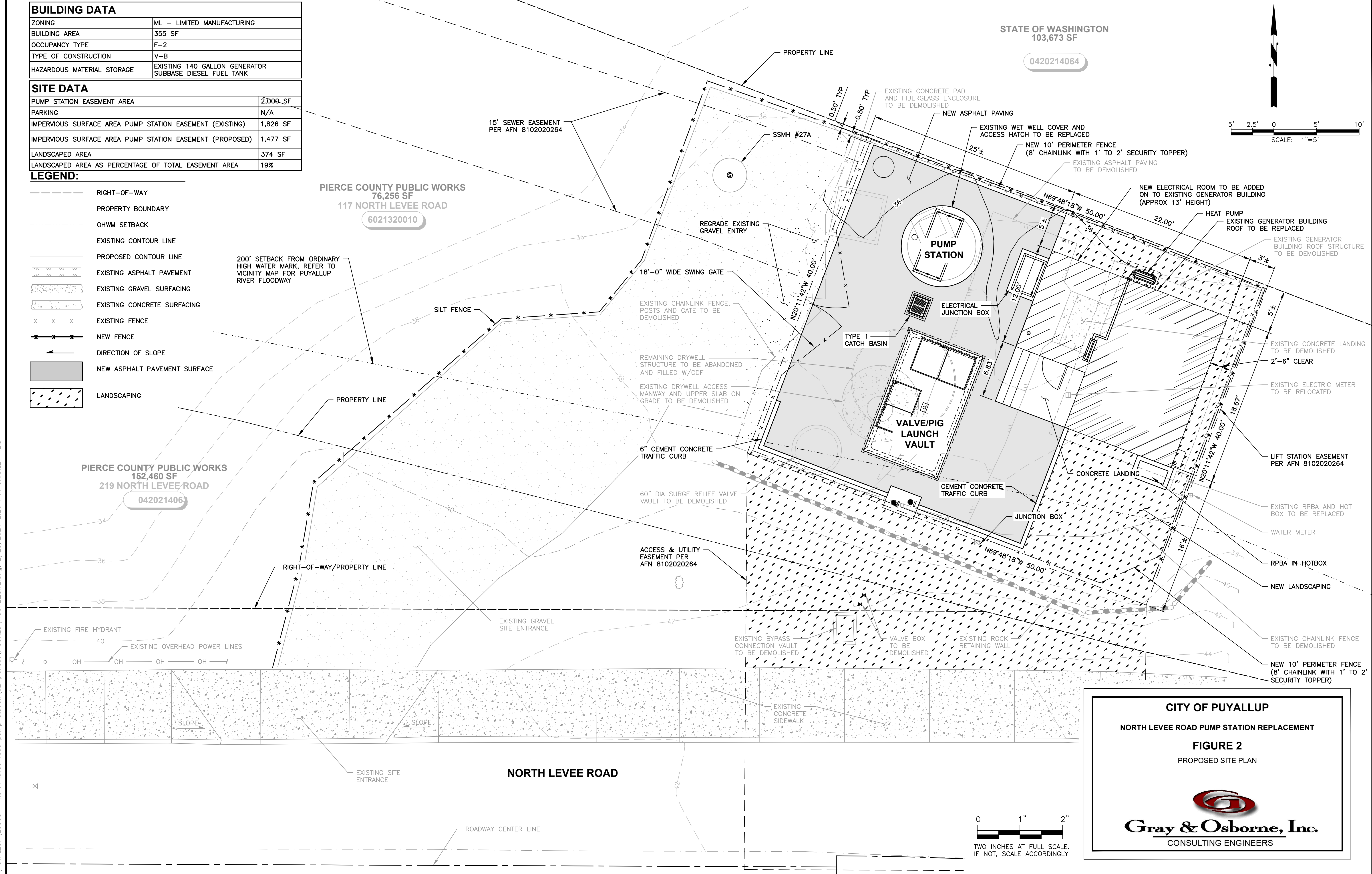
STATE OF WASHINGTON
103,673 SF

0420214064



PIERCE COUNTY PUBLIC WORKS
76,256 SF
117 NORTH LEVEE ROAD
6021320010

PIERCE COUNTY PUBLIC WORKS
152,460 SF
219 NORTH LEVEE ROAD
042021406



M:\PUYALLUP\20503 - north levee road pump station\02 planset\FIGURES\FIGURE_SITE.dwg, 2/25/2021 2:26 PM, CHARLEY REID

CITY OF PUYALLUP
NORTH LEVEE ROAD PUMP STATION REPLACEMENT
FIGURE 2
PROPOSED SITE PLAN

Gray & Osborne, Inc.
CONSULTING ENGINEERS

