



Mobile Food Vendor Pilot Program Map

Private property, public property and public streets (right-of-way) authorized for mobile vendor parking

Operating Hours: Max 4 hours in any right-of-way location. No parking in 15 min parking zones

Authorized ROW Locations

Both Sides

North Side Only

South Side Only

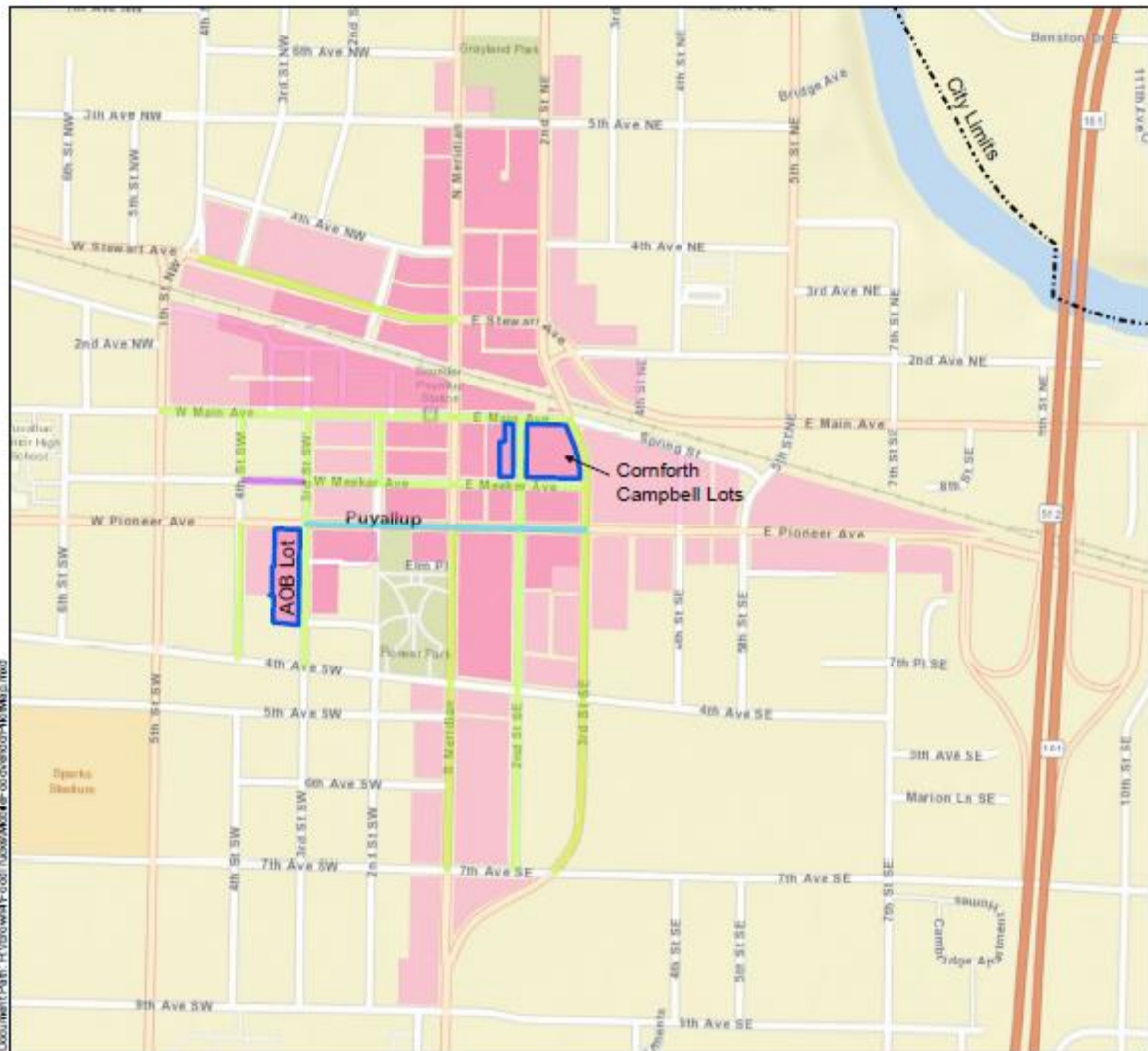
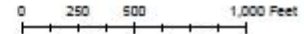
Authorized City Owned Parking Lot Locations

CBD - Central Business District

CBD-CORE - Central Business District Core



Date: 5/6/2019
Development Services
Department



Document Path: H:\Development\FoodVendor\Map\FoodVendorMap.mxd

The map features are approximate and are intended only to provide an indication of said feature. Additional areas that have not been mapped may be present. This is not a survey. Orthophotos and other data may not align. The County assumes no liability for variations ascertained by actual survey. ALL DATA IS EXPRESSLY PROVIDED "AS IS" AND "WITH ALL FAULTS". The County makes no warranty of fitness for a particular purpose.

Service Layer Credits: Sources: Esri, HERE, Garmin, USGS, Intermap, INCREMENT P, NRCan, Esri Japan, METI, Esri China (Hong Kong), Esri Korea, Esri (Thailand), NGCC, © OpenStreetMap contributors, and the GIS User Community