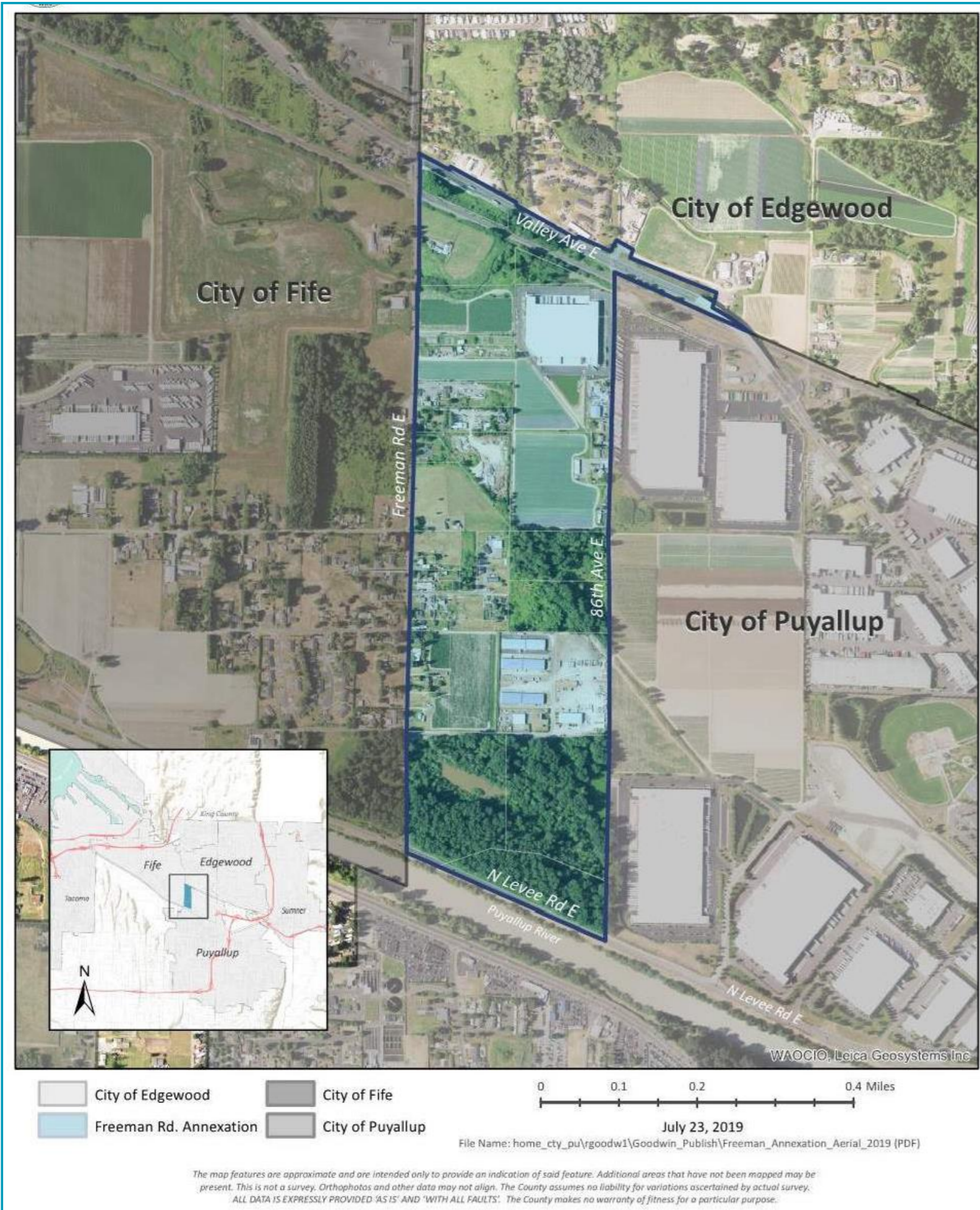




FREEMAN ROAD ANNEXATION

Potential Annexation Area



ANNEXATION CONSIDERATIONS

- Island of Pierce County surrounded by urban cities
- Different development potential
- Faster police response time
- Access to urban services and government representation

WHAT WILL CHANGE?

- Government administration
- Police and Fire services
- Property taxes and other fees
- Parcel addressing, to be consistent with City
- Garbage service

WHAT WILL STAY THE SAME?

- Puyallup School District
- Electricity and Natural Gas—PSE
- Water and Sewer Service—City of Puyallup

Annexation Process



More Information

Website: <https://www.cityofpuyallup.org/FreemanRoad>

Staff Contact: Kendall Wals, Associate Planner | kwals@ci.puyallup.wa.us | (253) 841-5462